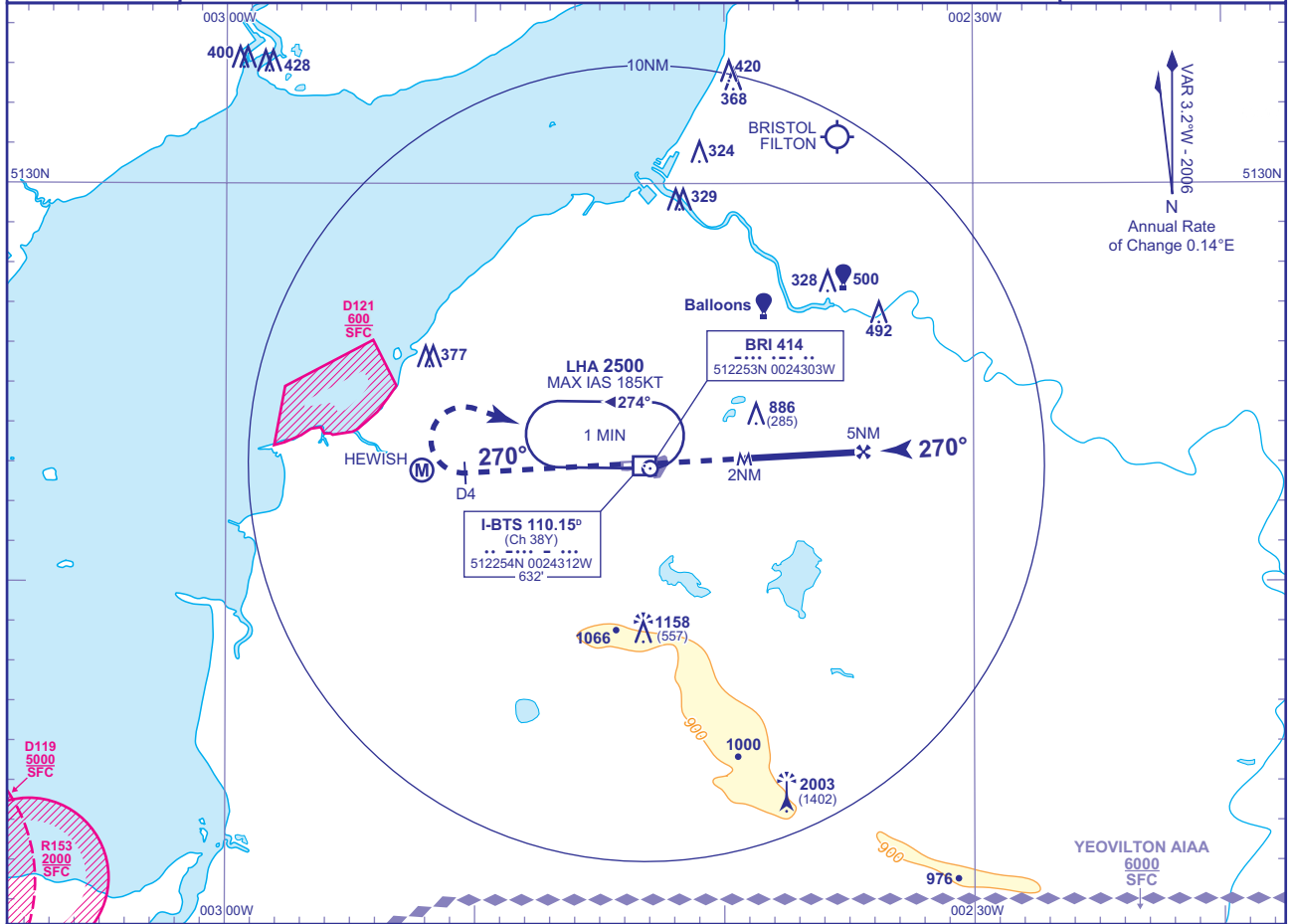


**INSTRUMENT APPROACH CHART - ICAO**

**BRISTOL**  
**SRA RTR 2NM**  
**RWY 27**  
 (ACFT CAT A,B,C,D)

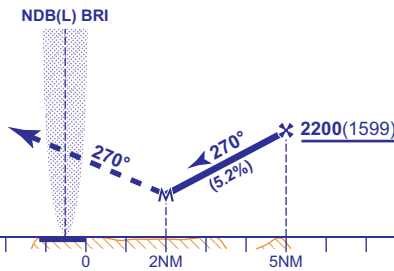
<p>MSA 25NM NDB(L) BRI</p>	TWR 133.850	BRISTOL TOWER	AD ELEVATION 622
	RAD 136.075, 125.650 (LARS)	BRISTOL RADAR	THR ELEVATION 601
	ATIS 126.025	BRISTOL INFORMATION	OBSTACLE ELEVATION 2003 AMSL (1402) (ABOVE THR)
			BEARINGS ARE MAGNETIC
TRANSITION ALTITUDE <b>6000</b>			



RADAR ADVISORY HEIGHTS Gradient 5.2%, 320FT/NM				
NM	5.0	4.0	3.0	2.0
ALT(HGT)	2200(1599)	1880(1279)	1560(959)	1240(639)

Intermediate and initial approach as directed by radar.

**MAPT 2NM RTR**  
 Climb straight ahead to 3000 then as directed.  
 RCF: Climb straight ahead at I-BTS DME 4 turn right to NDB(L) BRI at 3000.



DME I-BTS zero ranged to THR RWY 27												
Aircraft Category		A	B	C	D	Rate of descent	G/S KT	160	140	120	100	80
OCA (OCH)	Procedure	1140(539)	1140(539)	1140(539)	1140(539)		FT/MIN	840	740	630	530	420
VM(C)OCA (OCH AAL)	Total Area	1050(428)	1260(638)	1390(768)	1560(938)							
	North of RWY 09/27	1050(428)	1260(638)	1360(738)	1360(738)							

CHANGE: NEW FORMAT. TRANSITION ALTITUDE. YEOVILTON AIAA. OBSTACLES.

AERO INFO DATE 26 JUN 06