

INSTRUMENT APPROACH CHART - ICAO

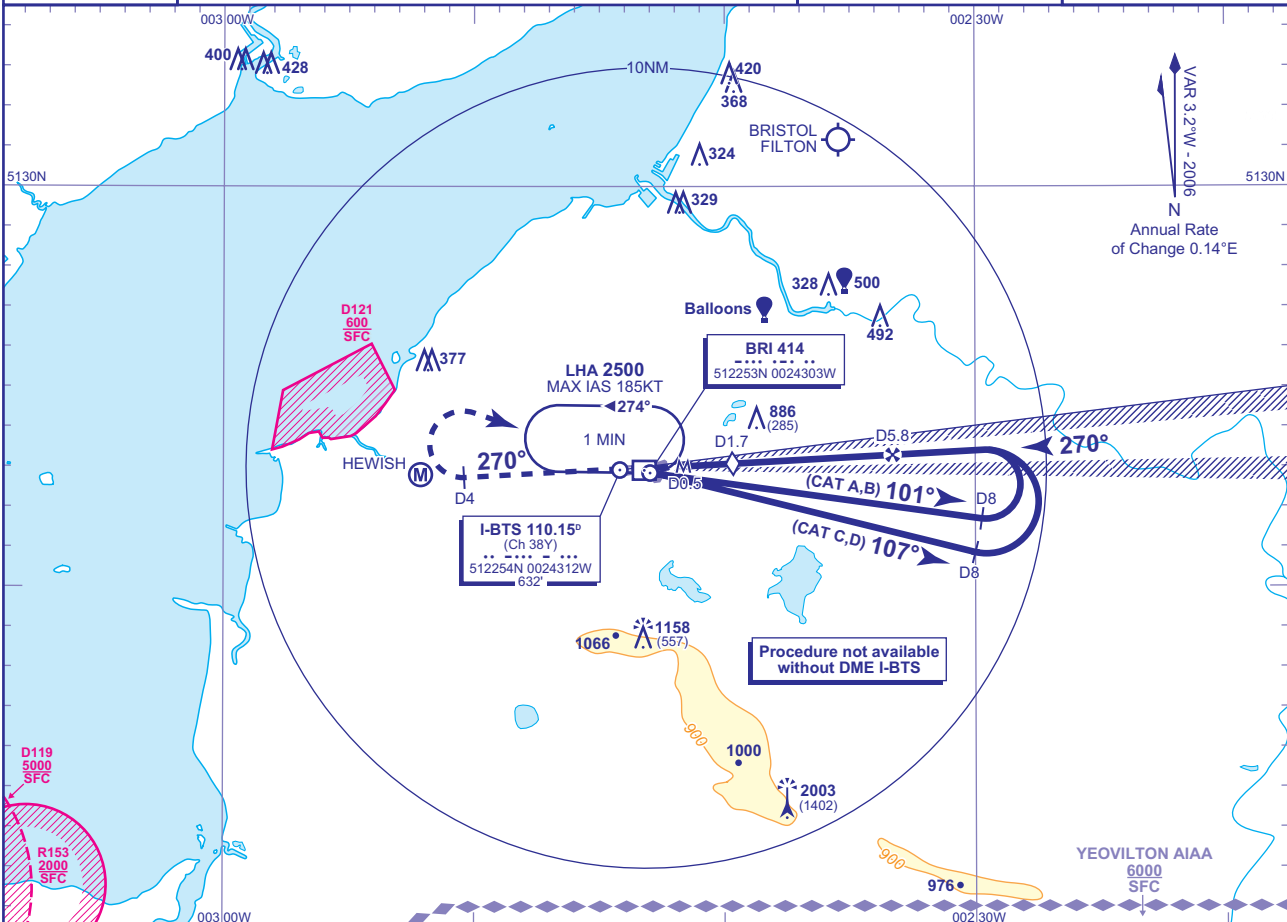
BRISTOL
LLZ/DME/NDB(L)
RWY 27
 (ACFT CAT A,B,C,D)



TWR	133.850	BRISTOL TOWER
RAD	136.075, 125.650 (LARS)	BRISTOL RADAR
ATIS	126.025	BRISTOL INFORMATION

AD ELEVATION	622
THR ELEVATION	601
OBSTACLE ELEVATION	2003 AMSL (1402) (ABOVE THR)

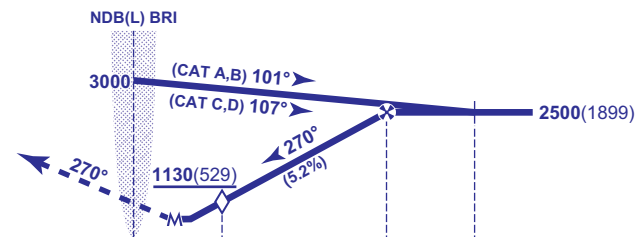
BEARINGS ARE MAGNETIC
 TRANSITION ALTITUDE **6000**



RECOMMENDED PROFILE Gradient 5.2%, 320FT/NM

DME I-BTS	5	4	3	2	1
ALT(HGT)	2250(1649)	1930(1329)	1610(1009)	1290(689)	970(369)

MAPT I-BTS DME 0.5
 Climb straight ahead to 3000 then as directed.
 RCF: Climb straight ahead. at I-BTS DME 4 turn right to NDB(L) BRI at 3000.



DME I-BTS zero ranged to THR RWY 27

Aircraft Category		A	B	C	D	Rate of descent	G/S KT	160	140	120	100	80
OCA (OCH)	Procedure	910(309)	910(309)	910(309)	910(309)	FT/MIN	850	740	640	530	430	
	Total Area	1050(428)	1260(638)	1390(768)	1560(938)							
VM(C)OCA (OCH AAL)	North of RWY 09/27	1050(428)	1260(638)	1360(738)	1360(738)							

NOTES Lowest altitude to commence procedure from hold is 2500.

CHANGE: NEW FORMAT. TRANSITION ALTITUDE. YEOVILTON AIAA. OBSTACLES.