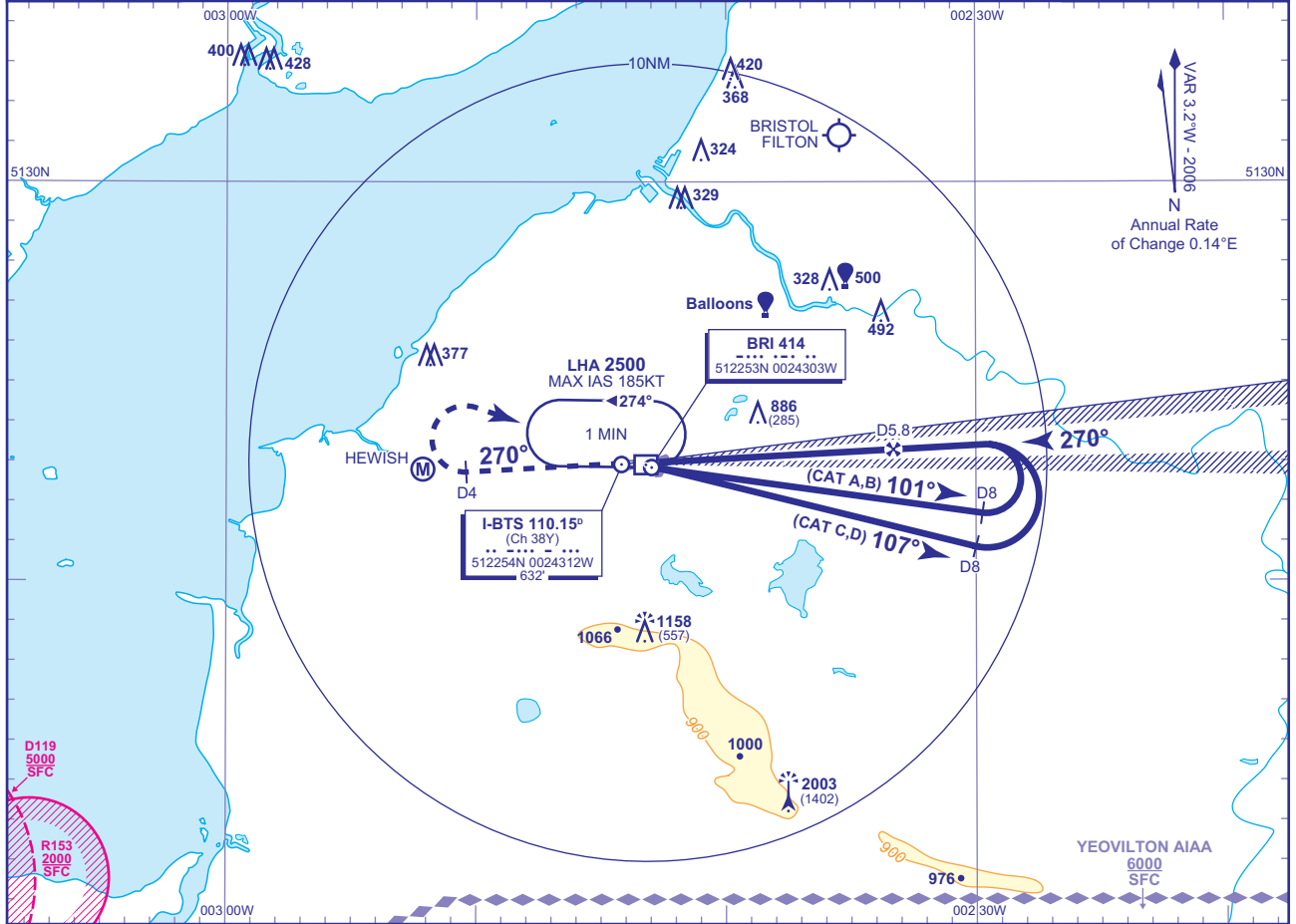


INSTRUMENT APPROACH CHART - ICAO

BRISTOL ILS/DME/NDB(L) RWY 27
(ACFT CAT A,B,C,D)

<p>MSA 25NM NDB(L) BRI</p>	TWR 133.850	BRISTOL TOWER	AD ELEVATION 622
	RAD 136.075, 125.650 (LARS)	BRISTOL RADAR	THR ELEVATION 601
	ATIS 126.025	BRISTOL INFORMATION	OBSTACLE ELEVATION 2003 AMSL (1402) (ABOVE THR)
			BEARINGS ARE MAGNETIC
TRANSITION ALTITUDE 6000			

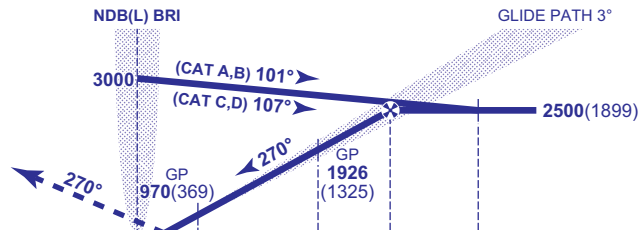


RECOMMENDED PROFILE GLIDE PATH 3°, 320FT/NM

DME I-BTS	5	4	3	2	1
ALT(HGT)	2245(1644)	1926(1325)	1607(1006)	1289(688)	970(369)

RDH 50

Climb straight ahead to 3000 then as directed.
RCF: Climb straight ahead, at I-BTS DME 4 turn right to NDB(L) BRI at 3000.



DME I-BTS zero ranged to THR RWY 27

Aircraft Category	A	B	C	D	Rate of descent	G/S KT	160	140	120	100	80
OCA (OCH)	CAT I	757(156)	768(167)	781(180)	797(196)	FT/MIN	850	740	640	530	430
	CAT II	664(63)	672(71)	682(81)	694(93)						
VM(C)OCA (OCH AAL)	Total Area	1050(428)	1260(638)	1390(768)	1560(938)						
	North of RWY 09/27	1050(428)	1260(638)	1360(738)	1360(738)						

AIRCRAFT UNABLE TO RECEIVE DME I-BTS
Advise ATC. Radar ranges will be provided at 8NM outbound and at 6NM and 4NM inbound.

NOTES Lowest altitude to commence procedure from hold is 2500.

CHANGE: NEW FORMAT. TRANSITION ALTITUDE. YEOVILTON AIAA. OBSTACLES.

AERO INFO DATE 26 JUN 06