

INSTRUMENT APPROACH CHART - ICAO

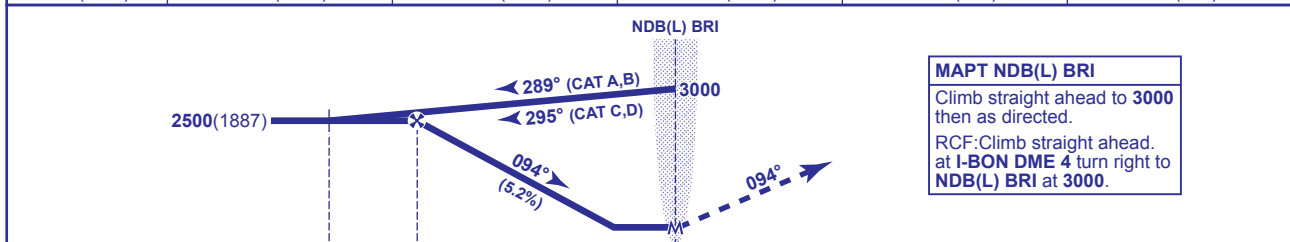
**BRISTOL
NDB(L)/DME
RWY 09**
(ACFT CAT A,B,C,D)

	TWR 133.850	BRISTOL TOWER	AD ELEVATION 622
	RAD 136.075, 125.650 (LARS)	BRISTOL RADAR	THR ELEVATION 613
	ATIS 126.025	BRISTOL INFORMATION	OBSTACLE ELEVATION 2003 AMSL (1390) (ABOVE THR)
			BEARINGS ARE MAGNETIC
			TRANSITION ALTITUDE 6000



RECOMMENDED PROFILE Gradient 5.2%, 320FT/NM

DME I-BON	5	4	3	2	1
ALT(HGT)	2260(1647)	1940(1327)	1620(1007)	1300(687)	980(367)



MAPT NDB(L) BRI
Climb straight ahead to 3000 then as directed.
RCF; Climb straight ahead. at I-BON DME 4 turn right to NDB(L) BRI at 3000.

DME I-BON zero ranged to THR RWY 09

Aircraft Category	A	B	C	D	Rate of descent	G/S KT	160	140	120	100	80
OCA (OCH)	With DME or RADAR	920(307)	920(307)	920(307)	920(307)	FT/MIN	840	740	630	530	420
	No DME or RADAR	N/A	N/A	1000(387)	1000(387)	FAF to THR	MIN:SEC	2:11	2:29	2:54	3:29
VM(C)OCA (OCH AAL)	Total Area	1050(428)	1260(638)	1390(768)	1560(938)						
	North of RWY 09/27	1050(428)	1260(638)	1360(738)	1360(738)						

ALTERNATIVE PROCEDURE EXTENDED HOLDING PATTERN Overhead IAF (NDB(L) BRI) at 3000 in holding pattern, turn left and descend on the extended outbound leg to 2500(1887). At I-BON DME 8 turn left onto FAT. From FAF (I-BON DME 5.8) descend to MDH.

AIRCRAFT UNABLE TO RECEIVE DME I-BON Advise ATC. Radar ranges will be passed at 8NM outbound and at 5.8NM inbound.

ALTERNATIVE TIMED PROCEDURE CAT C and D aircraft may, in the absence of either DME I-BON or radar ranges, fly outbound on baseturn procedure for 2MIN 12SEC. (Note: timed procedure **not available for CAT A or B aircraft**).

- NOTES**
- 1 Lowest altitude to commence procedure from hold is 2500.
 - 2 Maximum IAS for procedure with NO DME is 185KT (CAT C,D).
 - 3 FAT offset 4.85° from RWY C/L.

CHANGE: PROFILE CORRECTED.