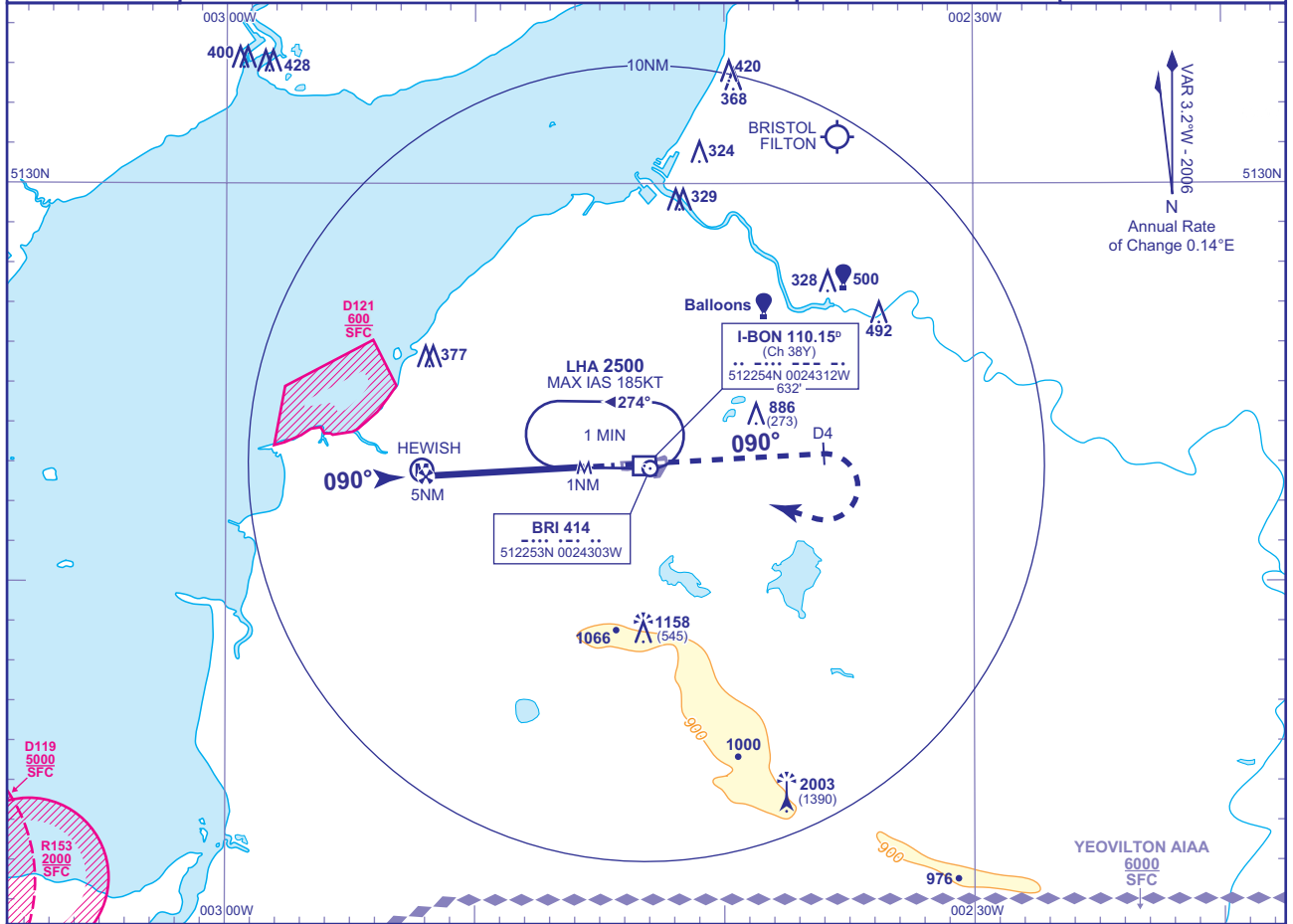


**INSTRUMENT APPROACH CHART - ICAO**

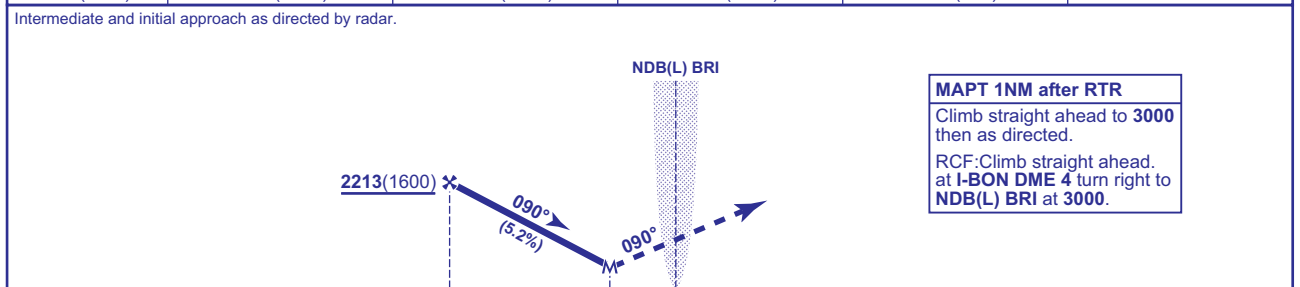
**BRISTOL**  
**SRA RTR 2NM**  
**RWY 09**  
 (ACFT CAT A,B,C,D)

<p>MSA 25NM NDB(L) BRI</p>	TWR 133.850	BRISTOL TOWER	AD ELEVATION 622
	RAD 136.075, 125.650 (LARS)	BRISTOL RADAR	THR ELEVATION 613
	ATIS 126.025	BRISTOL INFORMATION	OBSTACLE ELEVATION 2003 AMSL (1390) (ABOVE THR)
			BEARINGS ARE MAGNETIC
TRANSITION ALTITUDE 6000			



**RADAR ADVISORY HEIGHTS** Gradient 5.2%, 320FT/NM

NM	5.0	4.0	3.0	2.0
ALT(HGT)	2260(1647)	1940(1327)	1620(1007)	1300(687)



Aircraft Category		A	B	C	D	Rate of descent	G/S KT	160	140	120	100	80
OCA (OCH)	Procedure	913(300)	913(300)	913(300)	913(300)	FT/MIN	860	750	640	540	430	
	Total Area	1050(428)	1260(638)	1390(768)	1560(938)	RTR to MAPT	MIN:SEC	0:22	0:25	0:30	0:36	0:45
VM(C)OCA (OCH AAL)	North of RWY 09/27	1050(428)	1260(638)	1360(738)	1360(738)							

CHANGE: NEW FORMAT. TRANSITION ALTITUDE. YEOVILTON AIAA. OBSTACLES.

AERO INFO DATE 26 JUN 06