

INSTRUMENT APPROACH CHART - ICAO

**BRISTOL**  
**LLZ/DME/NDB(L)**  
**RWY 09**  
 (ACFT CAT A,B,C,D)

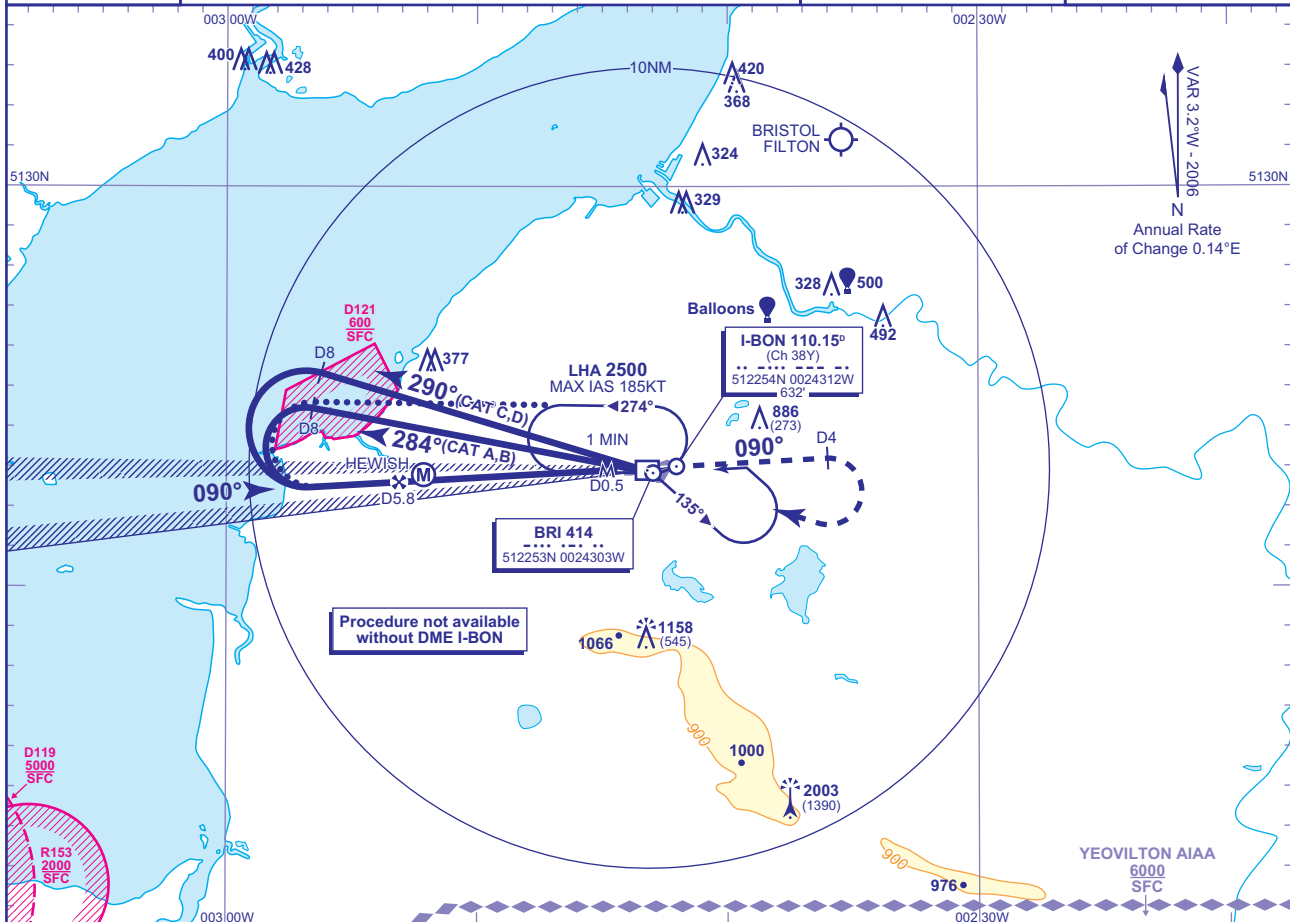


TWR	133.850	BRISTOL TOWER
RAD	136.075, 125.650 (LARS)	BRISTOL RADAR
ATIS	126.025	BRISTOL INFORMATION

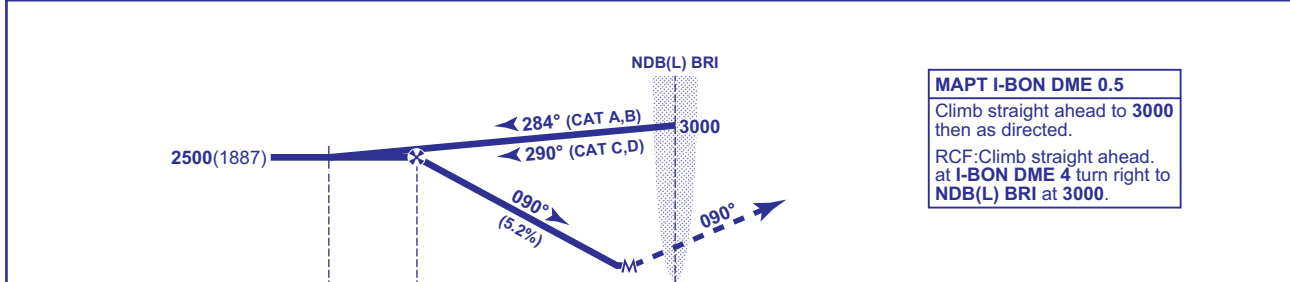
AD ELEVATION	622
THR ELEVATION	613
OBSTACLE ELEVATION	2003 AMSL (1390) (ABOVE THR)

BEARINGS ARE MAGNETIC

TRANSITION ALTITUDE  
**6000**



DME I-BON	5	4	3	2	1
ALT(HGT)	2260(1647)	1940(1327)	1620(1007)	1300(687)	980(367)



Aircraft Category		A	B	C	D	Rate of descent	G/S KT	160	140	120	100	80
OCA (OCH)	Procedure	900(287)	900(287)	900(287)	900(287)		FT/MIN	840	740	630	530	420
VM(C)OCA (OCH AAL)	Total Area	1050(428)	1260(638)	1390(768)	1560(938)							
	North of RWY 09/27	1050(428)	1260(638)	1360(738)	1360(738)							

**ALTERNATIVE PROCEDURE EXTENDED HOLDING PATTERN**  
 Overhead NDB(L) BRI at 3000 in holding pattern, turn left and descend on the extended outbound leg to 2500. At I-BON DME 8 turn left to intercept LLZ inbound. Then continue as for basic procedure.

**NOTES** Lowest altitude to commence procedure from hold is 2500.

CHANGE: NEW FORMAT. TRANSITION ALTITUDE. YEOVILTON AIAA. OBSTACLES.