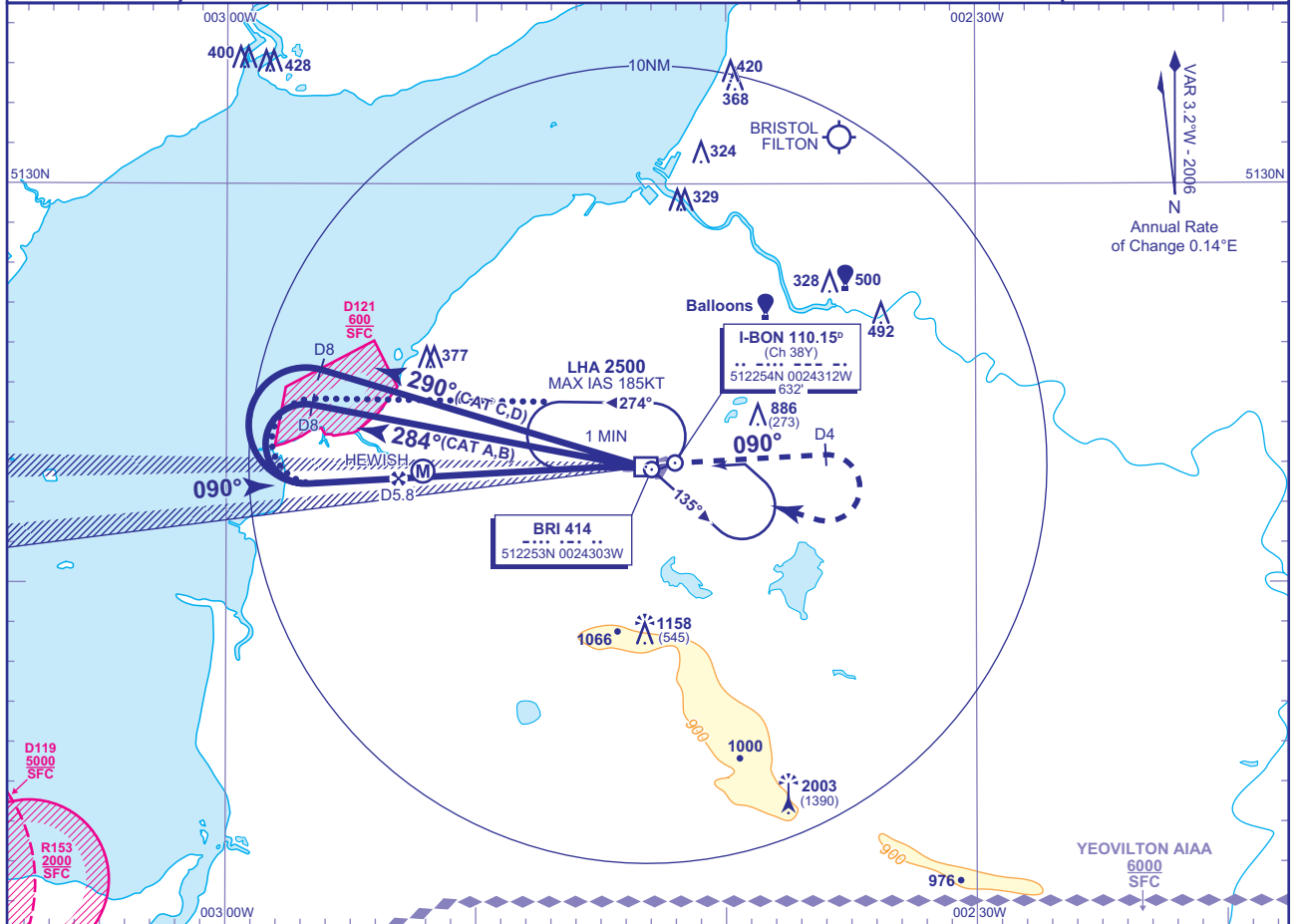


INSTRUMENT APPROACH CHART - ICAO

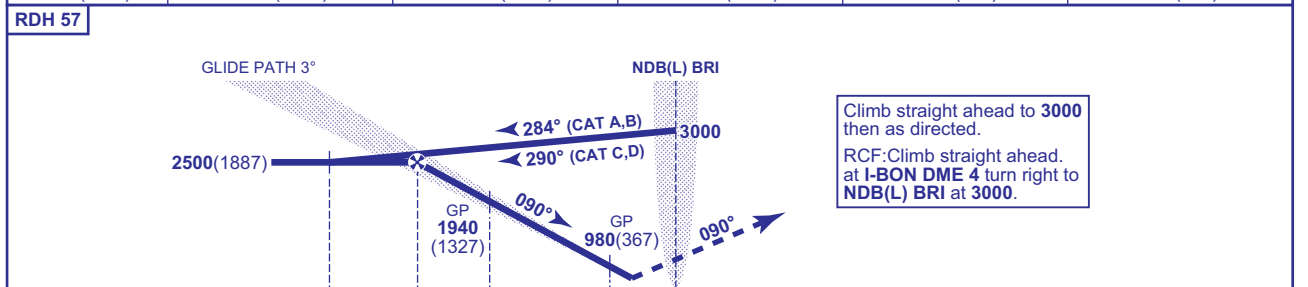
BRISTOL ILS/DME/NDB(L) RWY 09
(ACFT CAT A,B,C,D)

<p>MSA 25NM NDB(L) BRI</p>	TWR 133.850	BRISTOL TOWER	AD ELEVATION 622	TRANSITION ALTITUDE 6000
	RAD 136.075, 125.650 (LARS)	BRISTOL RADAR	THR ELEVATION 613	
	ATIS 126.025	BRISTOL INFORMATION	OBSTACLE ELEVATION 2003 AMSL (1390) (ABOVE THR)	
			BEARINGS ARE MAGNETIC	



RECOMMENDED PROFILE GLIDE PATH 3°, 320FT/NM

DME I-BON	5	4	3	2	1
ALT(HGT)	2260(1647)	1940(1327)	1620(1007)	1300(687)	980(367)



DME I-BON zero ranged to THR RWY 09											
Aircraft Category	A	B	C	D	Rate of descent	G/S KT	160	140	120	100	80
OCA (OCH)	CAT I	759(146)	771(158)	783(170)	797(184)	FT/MIN	840	740	630	530	420
VM(C)OCA (OCH AAL)	Total Area	1050(428)	1260(638)	1390(768)	1560(938)						
	North of RWY 09/27	1050(428)	1260(638)	1360(738)	1360(738)						

ALTERNATIVE PROCEDURE EXTENDED HOLDING PATTERN
Overhead NDB(L) BRI at 3000 in holding pattern, turn left and descend on the extended outbound leg to 2500. At I-BON DME 8 turn left to intercept LLZ inbound. Then continue as for basic procedure.

AIRCRAFT UNABLE TO RECEIVE DME I-BON
Advise ATC. Radar ranges will be provided at 8NM outbound and at 6NM and 4NM inbound.

- NOTES**
- 1 Lowest altitude to commence procedure from hold is 2500.
 - 2 Maximum IAS for procedure with NO DME is 110KT (CAT A); 140KT (CAT B); 185KT (CAT C,D).

CHANGE: NEW FORMAT. TRANSITION ALTITUDE. YEOVILTON AIAA. OBSTACLES.